

CERTIFICATE OF LOCATION OF GOVERNMENT CORNER

EAST QUARTER Corner of Section 32, Township 108N, Range 39W

5th Principal Meridian, State of Minnesota, County of MURRAY

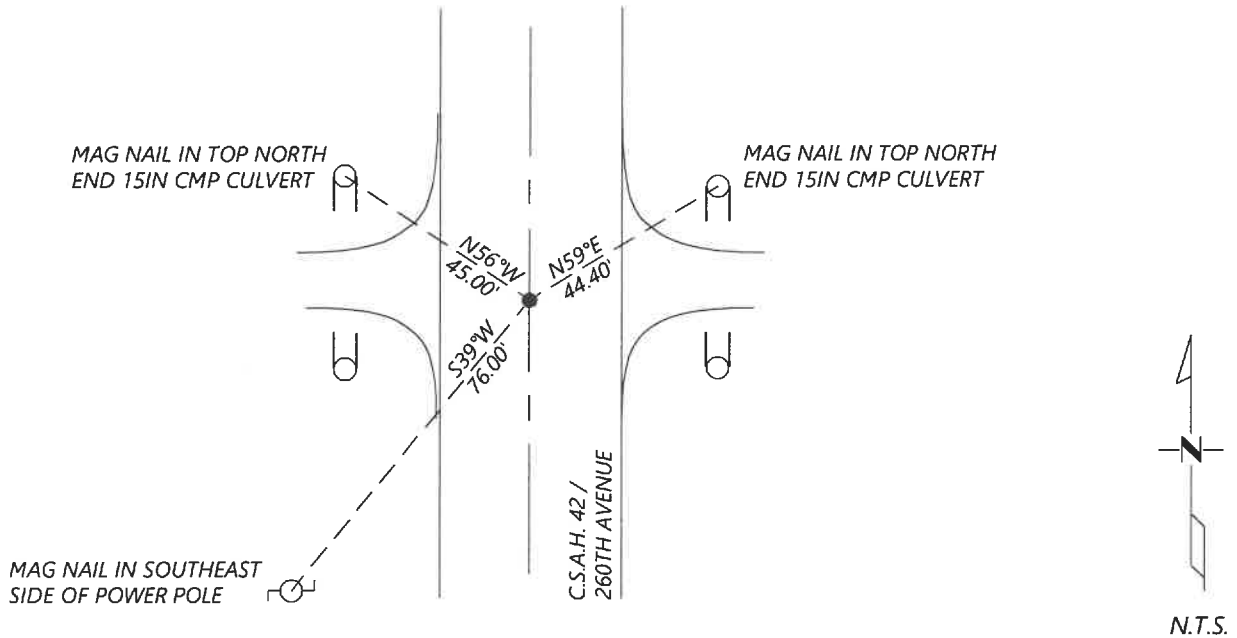
At the corner location shown on the sketch:

On 8/27/2020 found a NO. 4 REBAR WITHOUT CAP, FLUSH WITH ASPHALT

left monument as found lowered monument removed monument (explain)

On _____ placed a _____

SKETCH OF REFERENCE TIES



Statement of evidence for this corner location is on back of this page.

I hereby certify that this document was researched and prepared by me or under my direct supervision and that I am a licensed Land Surveyor under the laws of the State of Minnesota.

Signature [Handwritten Signature]

Date 6/17/2021 License No. 45874

Title:

- Land Surveyor
- Professional Engineer
- County Surveyor
- County Engineer

OFFICE OF THE COUNTY RECORDER

County of Murray

I hereby certify that this document was filed in the Co.

Recorder's office at _____ M. on the _____ day of _____ A.D. 20

County Recorder Karen Brown

by JUN 22 2021, Deputy

DOCUMENT NO. _____

Statement of Evidence:

East Quarter Corner of Section 32, Township 108 North, Range 39 West, 5th Principal Meridian, Murray County, Minnesota.

1861 July, GLO Notes: Set post in mound.

N/A Survey record for Section 32 shows a Kasota stone was located at the corner.

Tack in brace post	SE	57.3ft
Tack in corner post	E	48.8ft

1978 April, Highway Department records show a Kasota stone was located at the corner and a steel pin was placed above it.

Nail & cap in PP	SW	75.80ft
Nail & cap in corner	W	48.85ft
Nail & cap in post	NW	49.33ft

2000 March, Highway Department records show they placed a $\frac{3}{8}$ " rebar before gravel and bituminous were laid.

PK nail in top of culvert	NE	44.34ft
PK nail in top of culvert	NW	45.10ft
Nail & cap in PP	SW	82.45ft

2010 November, A survey in section 32 by Perry Zieske shows that an iron monument was found at the corner.

2017 May, Highway Department records show that they located a No. 4 rebar 1ft south of fence heading west and 0.5ft west of centerline. Coordinates: N: 197783.39 E: 558743.99

2020 September, Westwood Professional Services searched and found a $\frac{1}{2}$ " rebar and 2 ties from 2000 Highway Department records. Iron fits coordinates reported by Highway Department in 2017. I accepted the found monument and set an additional reference tie.

Analysis of the recovered data, field evidence and survey measurements, indicates that the monument found is the correct perpetuation of this corner. For additional information concerning this corner please contact Westwood Professional Services.